

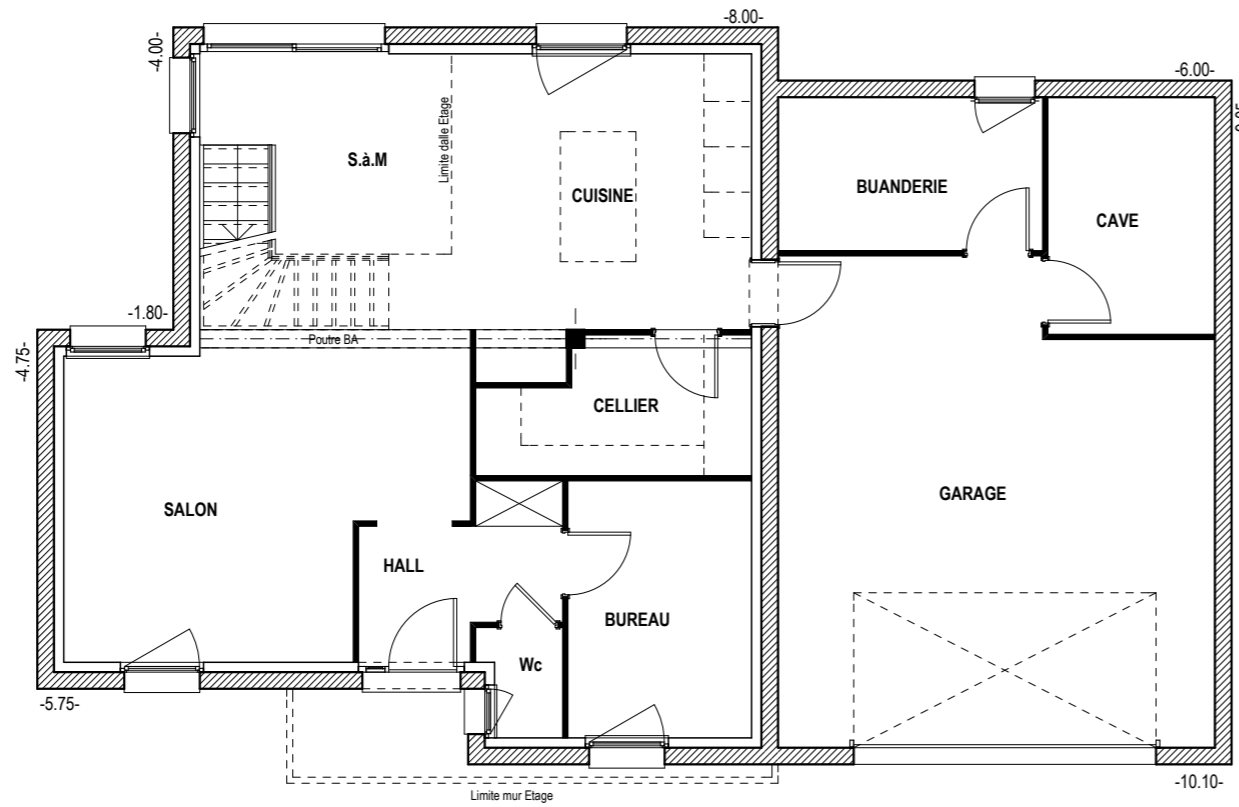


 Maisons VESTA





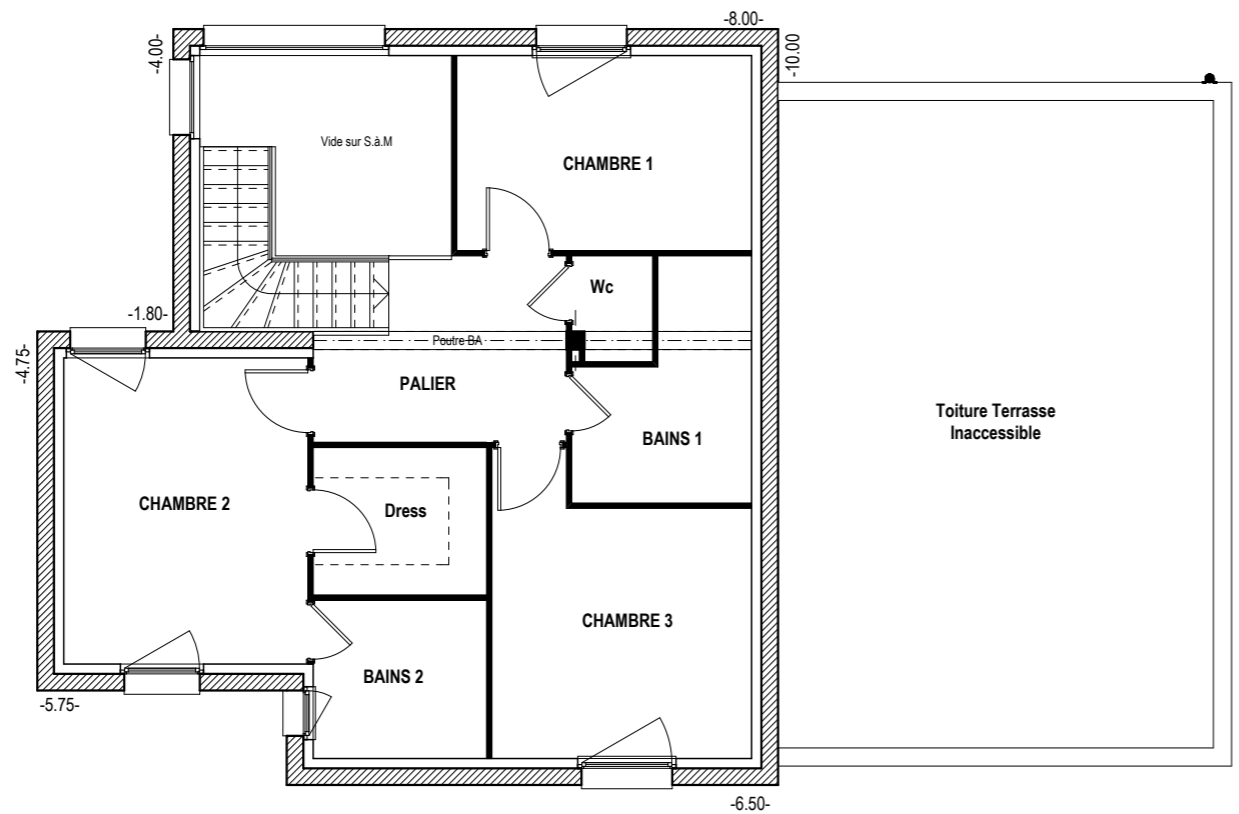




**SURFACES**

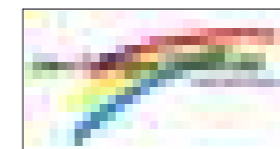
	Hab	Ann
Entrée	4.97m2	
Wc	1.43m2	
Bureau	8.26m2	
Salon	18.89m2	
S.a.M	11.36m2	
Cuisine	14.42m2	
Cellier	5.87m2	
Buanderie		7.10m2
Cave		6.93m2
Garage		35.66m2
<b>Total</b>	<b>65.20m2</b>	<b>49.69m2</b>

<b>Surface Totale Habitable</b>	<b>124.58m2</b>
<b>SHONrt</b>	<b>153.98m2</b>
<b>Surface vitrée</b>	<b>23.83m2</b>



**SURFACES**

Palier	7.26m2
Bains 1	6.11m2
Wc	1.43m2
Chambre 1	10.06m2
Chambre 2	13.08m2
Dress	4.47m2
Bains 2	4.80m2
Chambre 3	12.17m2
<b>Total</b>	<b>59.38m2</b>



**DOSSIER AVANT PROJET**

Date	Indice	Modifications

**VUES EN PLAN**

**MODELE D - Type F6**

ECH : 1:100  
Date:06/09/2013

**03**

Maitre d'ouvrage

Maisons VESTA  
218 Av de Champagne BP114 - 54704 PONT A MOUSSON